

IGNIS MENTIUM

EVENT



BROCHURE



13-15 MARCH, 2026

WELCOME TO CONNAISSANCE 8.0



JIPMER's international undergraduate medical conference, Connaissance 8.0, invites you to ignite your intellect and embark on a journey of academic discovery. More than just a conference, this esteemed event fuels an immersive learning environment where delegates participate in workshops, engage in stimulating debates and challenging quizzes, and spark insight through interactions with distinguished medical and scientific experts via panel discussions and symposia. Building on a legacy of excellence, Connaissance 8.0 presents a diverse programme designed to kindle curiosity and refine medical acumen. True to JIPMER's commitment to innovation, Connaissance 8.0 seamlessly blends top-tier medical education, cutting-edge research, and compassionate clinical practice. This transformative experience fans the flame of inquiry, empowering you as a future medical professional and researcher. Seize this opportunity to ignite your mind, deepen your understanding of the ever-evolving medical landscape, and connect with like-minded peers from across the country.



ABOUT JIPMER



JIPMER's illustrious legacy dates back to 1823, when it was founded as the École de Médecine de Pondichéry under the French administration, marking the beginning of nearly two centuries of excellence in medical education. With an unwavering commitment to academic rigor, clinical expertise, and pioneering research, JIPMER has earned its place among the nation's premier medical institutions, further reinforced by its recognition as an Institute of National Importance.

JIPMER students embody a rare blend of intellectual depth and adaptability, excelling not only in academics but also across a wide spectrum of extracurricular pursuits. Situated in the culturally rich town of Puducherry, where French influences still endure, the institute spans a lush 195-acre campus, abundant in greenery, offering an environment that fosters holistic learning and growth.



ABOUT PONDICHERRY



Pondicherry, a serene coastal retreat along the Bay of Bengal, captivates visitors with its unique blend of history, culture, and scenic beauty. Its charming colonial architecture, scenic promenades, vibrant culinary scene, and the spiritual haven of Auroville make it one of South India's most alluring travel destinations.

Step into Pondicherry, where the echoes of the past linger in its French-inspired streets, tranquility fills the air, and every meal is a celebration of flavors. Discover a place where the charm of the East harmonizes with the elegance of the West, offering an experience like no other!



WORKSHOPS
THE CONFERENCE

ACADEMIC

MHA

SCIENTIFIC



TIPS TO USE THIS BROCHURE:

- Clicking on **Back to Concourse** will return you to the index.
- Clicking on any heading in the Concourse takes you straight to that page.
- Clicking on **any contact** will open their **WhatsApp** chat directly.
- Clicking on the **Connaissance logo** in any page will open our **Instagram** page.



HOSPITALITY

LA CONCOURSE

Any Queries?
[Click here](#) to contact us!

REGISTRATION PROCESS



- Registrations for JIPMER CONNAISSANCE 8.0 shall be carried out through the official Connaissance website (www.jipmerconnaissance.com).
- Basic delegate registration is mandatory for participation in all events with the exception of -
 - Model Health Assembly
 - Conquest: Offline Intercollegiate Mediquiz,
 - Repertum: The Research Quiz
 - Xenor: The Microbiology Quiz
 - Anamnesis: The Essential Clue
 - Basic Life Support workshop.
- Basic delegate registration for all scientific events should be done only if your abstract gets selected for offline presentation.
- Upon registering as a delegate, you can register for various events as well as food and accommodation on the official Connaissance website.
- You will receive a confirmation email within 24 hours after delegate registration and event-wise emails after payment completion.
- The confirmation email will have a unique Delegate ID each event you register for, including basic delegate registration. You will be required to produce this Delegate ID for verification at the registration desk.
- Each delegate must also produce their valid college identity card and 4 passport sized photos at the registration desk.
- In case you encounter any difficulties or discrepancies during the registration procedure, kindly contact the Public Relations team.
- Keep yourself updated via the official Connaissance Instagram page!
- On spot registrations for workshops will be available on a first come, first served basis.

JOIN US AT THIS YEAR'S PREMIER EVENT

Connaissance 8.0 looks to provide a platform to spark curiosity, foster collaboration, and empower future medical professionals through knowledge, discourse, and innovation.

EXPERT TALKS

PANEL DISCUSSION

DEBATES

Participation in these sessions is free, complimentary to the purchase of a delegate card. Session slots can be booked in advance through the official website, www.jipmerconnaissance.com, ensuring a seamless and personalised experience. All participants will receive certificates of participation, acknowledging their involvement.





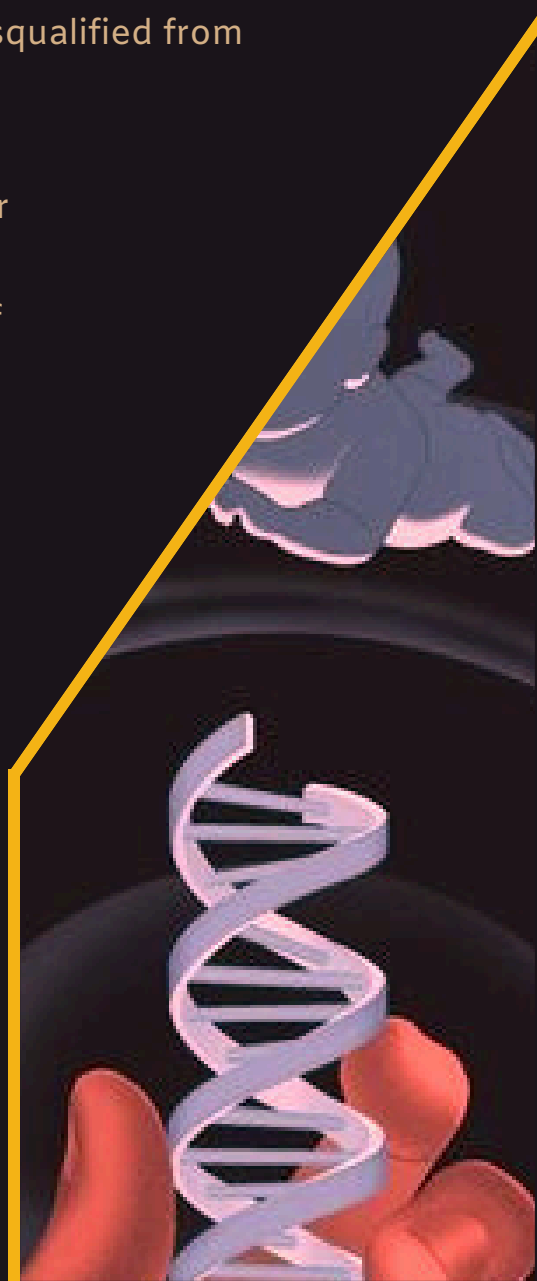
SCIENTIFIC EVENTS

RESEARCH PRESENTATION

“Where medical students take center stage to showcase their trailblazing research and pathbreaking perspectives”

- Eligibility: MBBS Students, CRRIs (Interns), BSc Nursing or Allied Health Sciences.
- Event registration is mandatory prior to abstract submission, via the CONNAISSANCE website www.jipmerconnaissance.com
- Candidates will receive a mail confirming their registration with further details for abstract submission.
- Last date for abstract submission is **January 31, 2026**.
- Abstracts submitted without registration will be disqualified from screening.
- Candidates submitting abstracts for research presentation can specify their preference for poster or oral presentation.
- Abstracts submitted will be evaluated by a panel of experts.
- The selected candidates will then be invited to present in only one of the two formats i.e oral/poster, as confirmed by the panel.
- Delegate registration is mandatory for finalists to participate in the offline event.
- Oral presentations are to be done using a PowerPoint slideshow.
- In case of any dispute, decision of the judges will be final.
- Registration fee: Rs.300

BACK TO CONCOURSE



ABSTRACT GUIDELINES

Format: The abstract must contain Part A and Part B

- Part A: Contains Title, Name, Institute name, Contact number, e-mail ID
- Part B: Word limit is 300 words. To be submitted under the following sub-headings. (Use the link to download proforma - [Click here](#))

Original Research

- Title
- Background
- Objectives
- Methods
- Results
- Conclusion

Original Review

- Title
- Background
- Search strategy
- Results
- Conclusion

NOTE:

Please refrain from including any identifying information such as your name, institute name, contact numbers, or email IDs in Part B. Abstracts containing such information will be disqualified from screening.



BACK TO CONCOURSE

ORAL PRESENTATION GUIDELINES:

DATE - March 14, VENUE - JISPH MPH

1. 10 minutes (Presentation: 8 minutes + Questions from judges: 2 minutes)
2. Maximum number of slides - 20
3. **Criteria for evaluation:**
 - Content
 - Originality / Novelty
 - Experimental Design
 - Quality of Presentation
 - Response to Questioning

PRIZE POOL
WORTH
₹18,000!

Contact:

Hridya - 6238870664
Anish - 9150257782

POSTER PRESENTATION GUIDELINES:

DATE - March 13, VENUE - APJ First floor

1. Selected candidates must bring their own posters to the venue of Poster Presentation.
2. Size: The poster board size is 3 feet tall and 4 feet wide. Posters should be made in LANDSCAPE layout only.
3. The time limit is 8 minutes (Presentation: 5 minutes + Questions from judges: 3 minutes)
4. Name of the Institute must not be present on the poster.
5. Other specifications will be intimated to the selected finalists.
6. **Criteria for evaluation:**
 - Content
 - Originality / Novelty
 - Experimental Design
 - Quality of Presentation
 - Visual appeal and Clarity
 - Response to Questioning

PRIZE POOL
WORTH
₹12,000!

The top three papers will bag attractive prizes as well as certificates of merit. All finalists will receive participation certificates.

BACK TO CONCOURSE

Contact:

Seshan - 8760778811
Kiran - 9717070833

INCEPTION

RESEARCH PROPOSAL PRESENTATION

“Ignite your research journey with a head start - formulate your research proposal and enhance the outcomes through expert insights.”

DATE: MARCH 13

VENUE: APJ Conference Hall

- Candidates are invited to present proposals for their original research.
- Eligibility: MBBS Students, CRRIs (Interns), BSc Nursing or Allied Health Sciences.
- Event registration is mandatory prior to abstract submission, via the CONNAISSANCE website www.jipmerconnaissance.com
- Candidates will receive a mail confirming their registration with further details for abstract submission.
- Last date for abstract submission is **January 31, 2026**. Abstracts submitted without registration will be disqualified from screening.
- The candidate should NOT have commenced work on the project yet.
- The abstract must be accompanied by a letter from the Head of the Department (Department in which the research is being carried out) attesting the same.
- Following screening and evaluation by a panel of judges, the selected proposals will be invited for oral presentation at CONNAISSANCE '26.
- Delegate registration is mandatory for finalists to participate in the offline event.
- Oral presentation must be done using a PowerPoint slideshow.
- The top three papers will bag attractive prizes as well as certificates of merit.
- All finalists will receive participation certificates.
- Confidentiality of the research idea will be maintained.
- Registration fee: Rs.300





ABSTRACT GUIDELINES:

Format: The abstract must contain Part A and Part B

Part A: Contains Title, Name, Institute name, Contact number, e-mail ID.

Part B: Word limit is 300 words. To be submitted under the following sub-headings (Use the link to download the proforma - [Click here](#))

- Title
- Introduction
- Objectives
- Methods
- Impact/Implications
- Conclusion

Please refrain from including identifying information such as your name, institute email IDs etc. in Part B. Abstracts containing such information will be disqualified from screening.

PRESENTATION GUIDELINES:

No limit on the number of slides

Format of the presentation:

- Title of the proposal
- Introduction
- Objectives
- Methodology (Study design, Data collection period, Study participants, Sampling, Study procedure, Parameters studied, Statistical tests, Ethical considerations)
- Implications
- Conclusion
- References

Criteria for evaluation:

- Content
- Originality/Novelty
- Experimental Design
- Feasibility
- Quality of Presentation
- Response to Questioning

**PRIZE POOL
WORTH
₹100000!**

BACK TO CONCOURSE



Contact:

Namitha - 9043290585

Prathap - 9025726453

INVENTIO

RESEARCH IDEA PRESENTATION

"Let your ideas shine!

Inviting innovation and invention in solving the most pressing problems of today"

DATE: MARCH 15

VENUE: APJ Conference Hall

- Each team may consist of a maximum of 3 members. Lone wolves are welcome!
- Cross college teams are allowed.
- Eligibility: MBBS Students, CRRIs (interns), BSc Nursing or Allied Health Sciences.
- The theme of Inventio this year is **"Time-Critical Care: Innovations Where Minutes Matter"**
- **Themes include (but are not limited to):** Maternal and child health, Communicable and non-communicable diseases, Urban and rural healthcare delivery, Emergency and critical care systems, and Public health interventions where delays alter morbidity and mortality.

The research ideas can fall under one of these categories:

- **Technology/Application (App):** A software program, hardware device, or other innovative solution that can be used to address a medical need; involves the use of technology to improve healthcare delivery, patient outcomes, or medical research. Ex: wearable devices, mobile health apps, medical imaging software, telemedicine.
- **Technique/Method:** A specific approach or procedure used to achieve a particular goal in medicine; involves the use of tools and equipment, but it also refers to the underlying scientific principles and processes, and includes Behaviour Change Communication. Ex: Diagnostic/Therapeutic/Surgical techniques, Research methods, Clinical trial methods.

[BACK TO CONCOURSE](#)



- **Tool/Equipment:** A physical object or device used in medicine to perform a specific task; can be as simple as a stethoscope or as complex as a medical imaging machine Ex: Stethoscope, Surgical instruments, X-Ray machine.

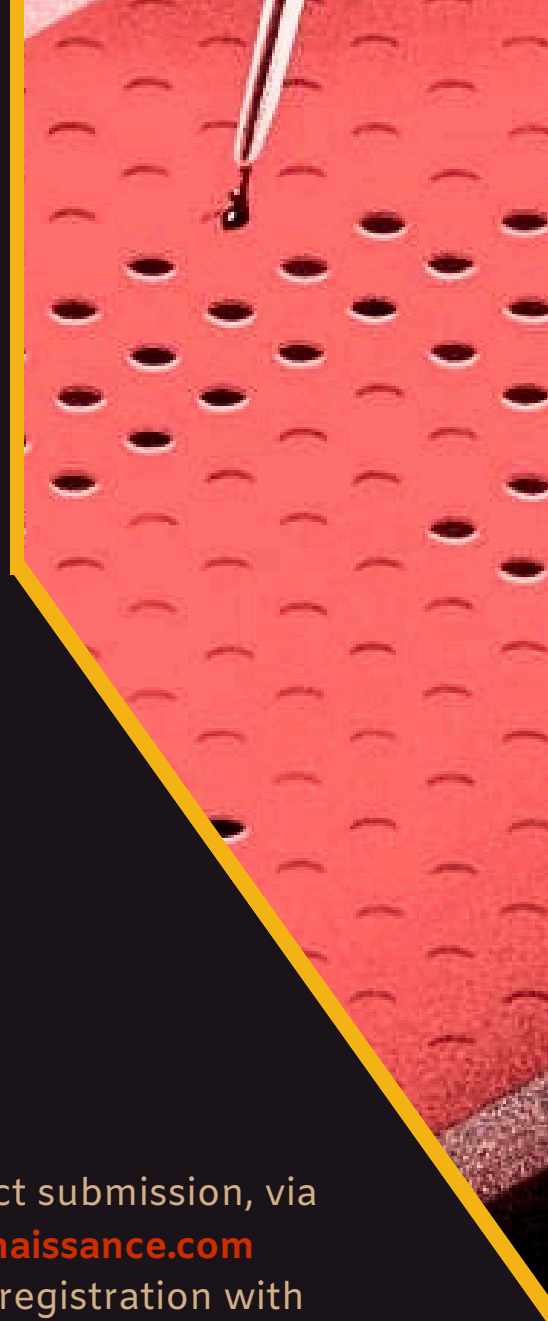
NOTE:

These categories are not mutually exclusive. A particular technology or application may involve multiple techniques and methods, and may use various tools and equipment. In case some abstracts fall into a grey area, the final categorization will be at the discretion of the judges. The specific examples provided above are not exhaustive.

GENERAL INSTRUCTIONS:

- The idea must be practically achievable.
- Event registration is mandatory prior to abstract submission, via the CONNAISSANCE website, www.jipmerconnaissance.com
- Candidates will receive a mail confirming their registration with further details for abstract submission.
- Last date for Abstract submission is **January 31, 2026**. Abstracts submitted without registration will be disqualified from screening.
- Shortlisted abstracts will be evaluated during the conference.
- Delegate registration is mandatory for finalists to participate in the offline event.
- Top three ideas will be awarded certificates of merit and cash prizes. All the finalists will receive participation certificates.
- Confidentiality of the research idea will be maintained.
- Registration fee: Rs.600

BACK TO CONCOURSE



ABSTRACT GUIDELINES:

Word limit - 500 words

Format: The abstract must contain Part A and Part B

Part A: Contains Title, Name, Institute name, Contact number, e-mail ID

Part B: Should be submitted with the following sub-headings:

- Title
 - Background
 - Objective
 - Idea
 - Novelty
 - Application and Expected Outcome
 - Implementation Strategy
 - Conclusion
-
- Pictures, flow charts, tables wherever felt necessary may be included.
 - Please refrain from using any identifying information like name, institute name, contact numbers, or email IDs in Part B. Abstracts containing such information will be disqualified from screening.
 - Link to sample abstract - [Click here](#)



PRESENTATION GUIDELINES:

Shortlisted participants will need to make a PowerPoint presentation. There is no slide limit.

15 minutes (Presentation: 8 minutes + Questions from judges: 7 minutes)

Criteria for evaluation

- Problem identification
- Originality
- Feasibility
- Novelty
- Quality of presentation
- Response to questioning



BACK TO CONCOURSE



Contact:
Sudarsan - 9942199399
Gourish - 9182548716

REPERTUM

THE RESEARCH QUIZ

“Ignite your curiosity and break new grounds - because after all, the pursuit of discovery begins only for those who dare to inquire!”

Each team may consist of maximum of 2 members. Lone wolves are welcome!

ELIGIBILITY:

- MBBS students, CRRIs (Interns), BSc Nursing or Allied Health Sciences.
- Cross-college and cross-course teams are ALLOWED.
- No restrictions on the number of teams per college.

QUIZ MODE:

Prelims: 2 modes are available-

- Participants may choose to attempt either ONE or BOTH online and offline modes, using the same registration. Teams participating in the online prelims who do not advance to the finals have the opportunity to enter the offline prelims by paying an additional fee of Rs.100.

ONLINE

Date: March 7

Time: 6:30 pm

Top 4 teams will make
the finals

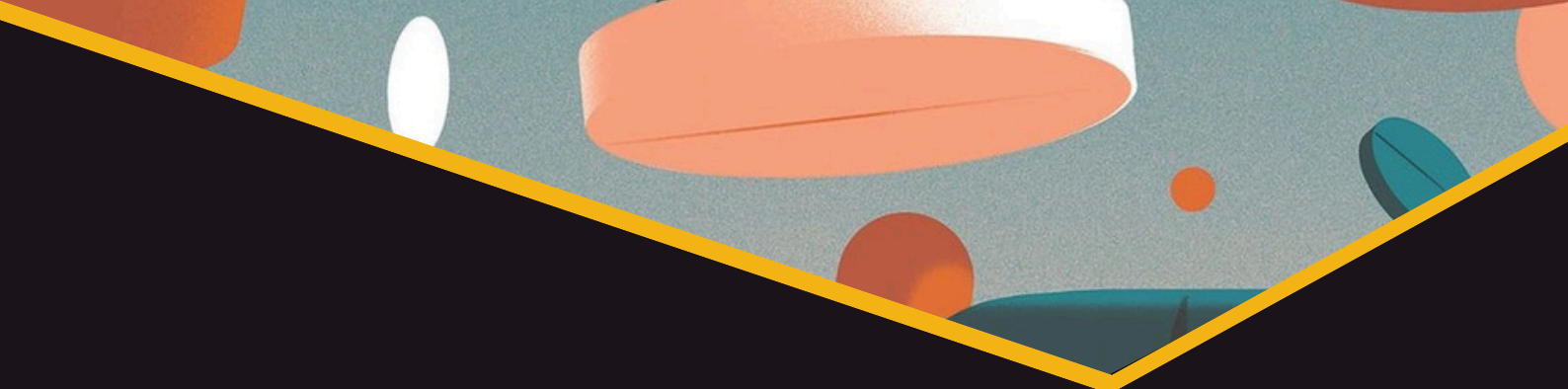
OFFLINE

Date: March 14

Venue: JAC Lecture Hall 1

Top 2 teams will make
the finals



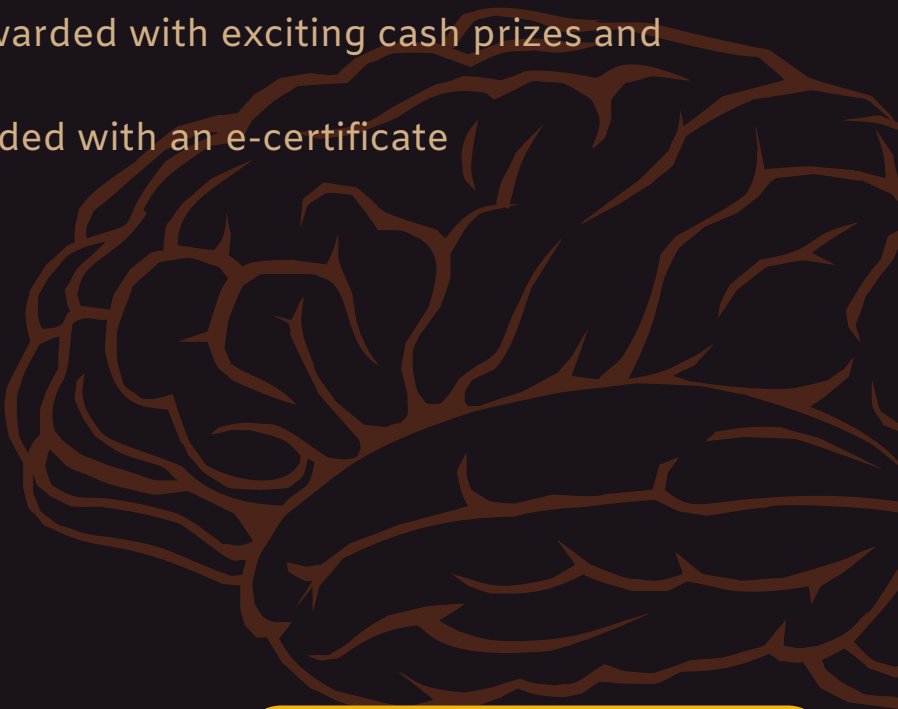
- 
- Finals will be conducted in the same venue and on the same day as offline prelims.
 - A total of 6 teams will be selected for the finals. Pair-up option is available for the lone wolf finalists. Expect intriguing questions for the audience too!

REGISTRATION:

- Registration is to be done online through the website www.jipmerconnaissance.com for both the modes.
- On spot registration is also available for the offline mode.
- Registration fee: Rs.250

PRIZE POOL
WORTH
₹10,000!

PRIZES:

- Top three finalists will be awarded with exciting cash prizes and certificates.
 - All participants will be provided with an e-certificate
- 

BACK TO CONCOURSE



Contact:

Piruthiviraj - 9384539230

Jashan - 9492366549

CASE CHRONICLES

THE CASE PRESENTATION

Unlocking clinical brilliance through engaging case discussions

DATE: MARCH 13 & 14

VENUE: JAC LH - 1/2/3

TEAM DIRECTIVES:

- Each team may consist of a maximum of 2 members. Lone wolves are welcome!
- Cross-college teams are not allowed. No instructions on the number of teams per college.
- MBBS Students, CRRIs (Interns), BSc Nursing or Allied Health Science

SUBJECTS:

Clinical cases from the following subjects are invited:

- Medicine
- Surgery
- Obstetrics and Gynaecology
- Paediatrics
- ENT
- Ophthalmology

GENERAL INSTRUCTIONS:

- Event registration is mandatory prior to abstract submission, via the CONNAISSANCE website - www.jipmerconnaissance.com
- Candidates will receive a mail confirming their registration with further details for abstract submission.

BACK TO CONCOURSE



- Last date for abstract submission is **January 31, 2026**. Abstract submitted without registration will be disqualified from screening.
- The abstract must be accompanied by a letter from the Head of the Department attesting that the given case is from a true patient in their respective hospital.
- Plagiarism or malpractice of any form is strictly prohibited, and the abstract will be rejected.
- Selected abstracts from each subject will be invited for oral presentation at CONNAISSANCE.
- Delegate registration is mandatory for finalists to participate in the offline events.
- Registration fee: Rs.500

ABSTRACT GUIDELINES:

Format: The abstract must contain Part A and Part B

Part A: Contains Title, Name, Institute name, Year, Course, Contact number, e-mail ID

Part B: should be submitted with the following sub-headings:

- History
- Salient examination findings
- Provisional and differential diagnosis
- Investigations
- Final diagnosis
- Management

Word limit: 1000 words

Formatting specifications: Times New Roman, Size 12, Line spacing 1.5, Alignment justified

BACK TO CONCOURSE



PRESENTATION GUIDELINES:

- Oral presentation is to be done using a PowerPoint slideshow
- 10 minutes (Presentation: 8 minutes + Questions from judges: 2 minutes)
- No limit on the number of slides

Criteria for evaluation :

1. Thoroughness of history and examination
2. Approach to diagnosis
3. Investigations and management
4. Presentation skill
5. Response to questions



The top three presentations will bag attractive prizes and certificates of merit. All finalists will receive participation certificates.



[BACK TO CONCOURSE](#)



Contact:

Vamshi - 7736275628
Prithwinsiibi - 9791879747
Shree Harini - 7010002009



ACADEMIC EVENTS

CONQUEST

OFFLINE INTERCOLLEGIATE SENIOR QUIZ

Conquest is our offline intercollegiate mediquiz covering ALL subjects in the MBBS Curriculum.

WHO IS ELIGIBLE?

DATE- MARCH 14

- Medical undergraduate students (post interns are not eligible)
- Teams of 3, with a maximum of 1 CRRI per team.
Lone wolves are welcome too!
- All participants must bring their college ID card.
- Cross-college teams are **NOT** allowed.
- No restrictions on the number of teams per college

QUIZ STRUCTURE:

Prelims:

- Venue: APJ Abdul Kalam Auditorium
- Time: 8:30 AM
- The top 6 teams will be selected for the **FINALS**.

Finals:

- Venue: APJ Abdul Kalam Auditorium
- Time: 2 PM
- Expect interesting and intriguing questions for the audience!
- Google Form for registering will be circulated shortly
- Delegate registration is not required.
- Follow [@jipmerconnaissance](#) for updates

Registration fees - ₹600/- per team

PRIZE POOL
OF
₹32,000

BACK TO CONCOURSE



Contact:

Bharath - 8122560086

Saminathan - 8610728273

ANAMNESIS

THE ESSENTIAL CLUE

Anamnesis is the first edition of our offline intercollegiate medi-puzzle where participants will solve intriguing cases across various domains of medicine

WHO IS ELIGIBLE?

DATE - MARCH 15

- Medical undergraduate students (post interns are not eligible)
- Teams of 2, with maximum of 1 CRRI per team. Lone wolves are welcome too!
- All contestants must bring their College ID card.
- Cross-college teams are allowed.
- No restrictions on the number of teams per college

QUIZ STRUCTURE:

Prelims:

- Venue: Multi-Purpose Hall, APJ Auditorium
- Time: 1:30 PM
- The top 4 teams will be selected for the Finals.

Finals:

- Venue: Multi - Purpose Hall, APJ Auditorium
- Time: 3:30 PM
- Expect intriguing clinical case-themed rounds where the clue is hidden between the lines.
- Expect interesting questions too for the audience!
- Google Form for registration will be circulated shortly, follow [**@jipmerconnaissance**](#) to stay updated
- Spot registration is also available.
- Delegate registration is not required.

Registration fees - ₹200/- per team
(exclusive of lunch)

PRIZE POOL
WORTH
₹6,000
+
BOOKS



Contact:

Dinesh - 9490364128

Varun - 8072510962

XENOR

THE MICROBIOLOGY QUIZ

Xenor is India's premier microbiology quiz, hosted by renowned author Dr. Apurba Sastry

WHO IS ELIGIBLE?

DATE - MARCH 15

- Medical undergraduate students (post interns are not eligible)
- Teams of 3, with maximum 1 CRRJ per team.
Lone wolves are welcome too!
- All participants must bring their college ID card.
- Cross-college teams are **NOT** allowed.
- No restrictions on the number of teams per college

QUIZ STRUCTURE:

Prelims:

- Venue: JAC LH - 1,2,3
- Time: 8:30 AM
- The top 25 teams will be selected for the Semi-Finals.

Semi-Finals:

- Venue: APJ Auditorium
- Time: 12 PM
- The Top 6 teams will be selected for the Finals.

Finals:

- Venue: APJ Auditorium
- Time: 3 PM
- Expect interesting and intriguing questions for the audience too at the Finals!

Registration fees - ₹600/- per team
(exclusive of lunch)

PRIZE POOL
OF
₹1,00,000

BACK TO CONCOURSE



Contact:

Bharath - 81225 60086

Rithik Roshan - 80566 96968

STUDENT SYMPOSIUM

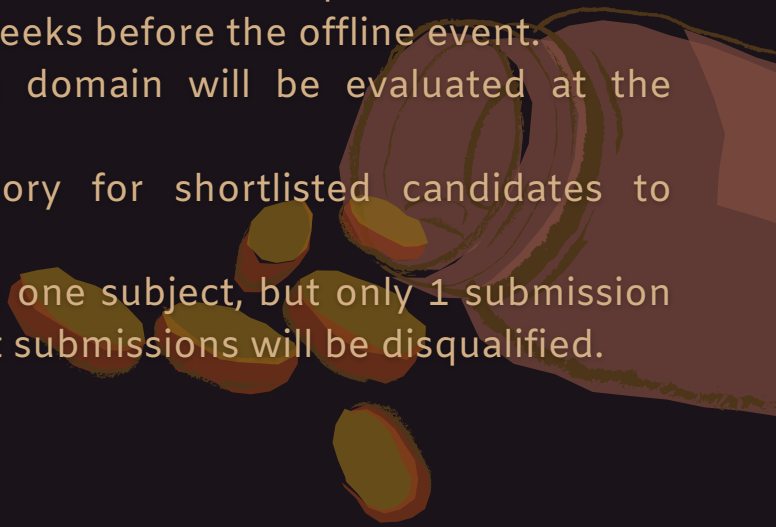
IGNITING MINDS, UNLEASHING INNOVATION

DATE - MARCH 13

GENERAL INSTRUCTIONS:

- Each team must consist of 2-6 members.
- Team members may be MBBS students or CRRIs (Interns)
- Each team must present a short symposium from the following domains:
 - a. General Surgery
 - b. General Medicine
 - c. Obstetrics and Gynaecology
 - d. Paediatrics
 - e. Physiology
 - f. Pathology
 - g. Ophthalmology
 - h. Otorhinolaryngology
- Team registration is mandatory prior to abstract submission.
- Interested Candidates must submit the outline of their presentation through a Google Form. The link will be sent to their email upon successful registration.
- The outline should describe how the topics will be explained, including any teaching aids or methods.
- Deadline for abstract submission - **January 31**
- Abstracts submitted without registration will be disqualified.
- Screening results will be out 1-2 weeks before the offline event.
- 4-6 shortlisted teams from each domain will be evaluated at the conference.
- Delegate registration is mandatory for shortlisted candidates to participate in the offline event.
- A team may submit for more than one subject, but only 1 submission per subject is allowed. Subsequent submissions will be disqualified.

PRIZE POOL
WORTH
₹64,000!



ABSTRACT GUIDELINES:

Abstracts must be submitted through the Google Form in PDF format.
The abstract should include the following

- 1.Name of the Subject
- 2.Title of Presentation
- 3.Learning Objectives of Presentation
- 4.Teaching Outline (list of subtopics covered)
- 5.Summary of Presentation
- 6.Teaching Methodology / Approach
- 7.References / Resources (3–5)

Word limit: 500 words (for summary of presentation)

Formatting specifications: Times New Roman, Size 12, Line spacing 1.5

Do not include names, emails, phone numbers, or any identification details in the abstract document.

Registration fees: ₹800 per team per abstract submission

PRESENTATION GUIDELINES:

Time limit: 20 minutes (Symposium: 15 min + Questions from judges/audience: 5 min)

Final Judging Criteria (for Offline Presentations)

Shortlisted teams presenting offline at Connaissance will be evaluated by the faculty based on:

- 1.Choice of topic (neither too niche nor too broad)
- 2.Clarity and quality of content
- 3.Individual performance
- 4.Time management and handling of Q&A
- 5.Novelty in teaching methodology

BACK TO CONCOURSE



Contact:

Dinesh - 9490364128

Naresh - 8939838372

Chandralekha - 9150917568



WORKSHOPS

SCHEDULE

DATE

FORENOON

AFTERNOON

Day 1

(13th March, 2026)

Neonatal Resuscitation #1
Radiodiagnosis #1

Basic Surgical Skills #1
Hands-on Ophthalmology
ECG Mastery
Emergency Otolaryngology
Essentials of Obstetrics
Neonatal Resuscitation #2
Neuroinvestigations #1
Radiodiagnosis #2
Research Paper Writing

Day 2

(14th March, 2026)

Basics of Oncology
Biodesign, Innovation and AI (full day)
BLS #1, #2
Forensics Decoded
Hands-on Gynaecology
POCUS
Research Methodology
Splints and Plasters
The ECHO Lens
Trauma Care
Radionuclide Imaging and Therapy

Airway Management
Basic Surgical Skills #2
Biodesign, Innovation and AI (full day)
BLS #3, #4
Neuroinvestigations #2
Spirometry
Robotic Surgery
Endoscopy

Day 3

(15th March, 2026)

Basic Anaesthesiology
BLS #5, #6
Chest Imaging
Clinical skills
Deciphering Dermatology
Urology

ABG Analysis
BLS #7, #8
Plastic Surgery



*The workshop schedule may be subject to changes

RADIODIAGNOSIS



Dive into the vast world of medical imaging, ranging from basic X-rays to complex 3D reconstructed CT scans. Harness your newfound knowledge to review real-life cases and enhance your diagnostic skills!

UROLOGY ESSENTIALS



Join our exclusive hands-on training workshop, designed specifically for undergraduates. Explore the latest techniques and technologies in Urology across various interactive stations, including Catheterization, Endourology, Oncology, Transplantation, Laparoscopy, Imaging and more!

CHEST IMAGING



Explore the basics of Chest X-Rays, focusing on image acquisition and interpretation of key findings. Learn essential radiographic techniques used in pulmonary medicine.

SPIROMETRY



Master the use of spirometers and interpretation of lung function tests. Gain hands-on experience with vital capacity, expiratory volumes, and flow rates, aiding in respiratory diagnosis and management.

THE ECHO LENS



Step into the fascinating world of cardiac imaging and explore the heart's intricate anatomy like never before through cutting-edge ultrasonography. Guided by experts from the Department of Cardiology, you'll gain hands on experience with this powerful diagnostic tool and master the art of interpreting echocardiography findings.

BASICS OF ONCOLOGY



Engage with real-life case studies and gain insights into cancer treatment strategies from JIPMER's world-class medical oncology team. Experience a tour of our state-of-the-art Regional Cancer Center and explore the diverse range of cancer therapies available

ECG MASTERY

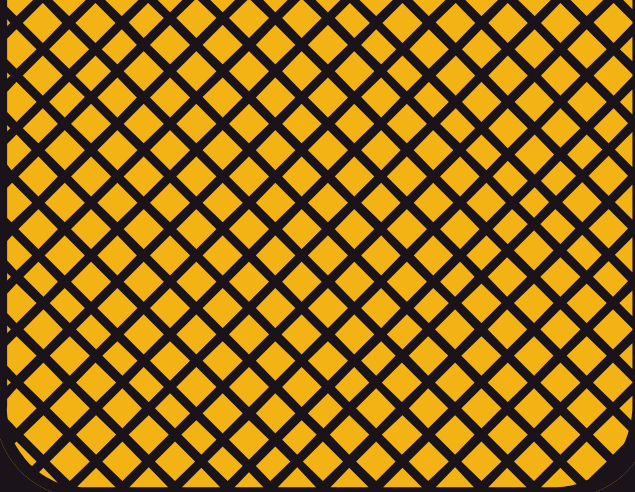


Turn confusion into clarity in this workshop that takes you on an exciting journey to unravel the heart's electrical secrets. Discover how to decode the rhythm of life, understand the causes behind ECG wave changes, and explore their real-world clinical significance.

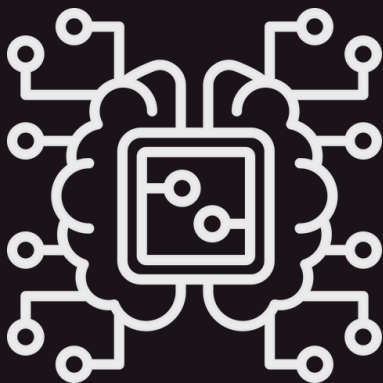
DECIPHERING DERMATOLOGY



Explore lab investigations such as KOH mounting, dermoscopy and advanced procedures like laser therapy and cryotherapy. Expand your knowledge of dermatological emergencies and dermatological manifestations of systemic diseases through engaging case discussions and live demonstrations.



BIODESIGN, INNOVATION AND AI



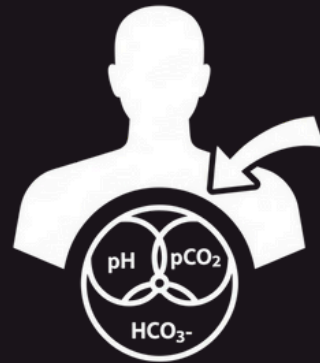
At this multifaceted workshop, you'll be trained to identify healthcare challenges, test the viability of possible solutions, and develop the proof-of-concept for the same and apply for intellectual property. You will also learn about the fundamental principles underlying the creation of AI systems in medicine.

POCUS



Gain practical, hands-on experience in essential ultrasonography techniques, including E-FAST and basic ultrasound imaging. This comprehensive training also features a dedicated section on ultrasound-guided procedures, equipping you with the skills to perform these techniques confidently in clinical settings.

ARTERIAL BLOOD GAS ANALYSIS



Deepen your understanding of acid-base homeostasis and learn to interpret results of acid-base disorders, with a special focus on emergency scenarios. This session emphasizes practical applications, allowing you to test your knowledge and decision-making skills through interactive case studies that replicate real-world clinical situations.

CLINICAL SKILLS



Refine your clinical skills through immersive, hands-on training led by the Department of Medicine at JIPMER. This comprehensive workshop features real-life case examinations, patient examinations under expert supervision, and an in-depth exploration of clinical methods and techniques.

BASIC ANAESTHESIOLOGY

BASIC LIFE SUPPORT



Our **AHA-certified** Basic Life Support (BLS) course equips you with comprehensive knowledge and skills in cardiopulmonary resuscitation (CPR) to handle emergencies anytime, anywhere. Upon successful completion, you'll earn AHA certification and enjoy two years of access to exclusive AHA study materials

ROBOTIC SURGERY



Step into the future of surgical innovation. This workshop offers a rare, immersive look into the world of robotic-assisted procedures—starting with a live, real-time viewing of robotic surgery inside the operating theatre.

Participants will then shift from observation to action with a hands-on session on a high-precision robotic surgery simulator, experiencing the finesse, accuracy, and responsiveness of modern surgical robotics.



Get hands-on training on important modes of anaesthetic delivery such as Epidurals and GA, under the guidance of experienced professionals. In this workshop, you'll get to explore methods of oxygen delivery, basic anaesthetic skills and crisis management in the OT.

ENDOSCOPY



Discover the art and precision of endoscopic procedures through an engaging, hands-on experience. This workshop puts you directly at the controls of advanced endoscopy simulators with haptic feedback, where you'll navigate through virtual anatomical pathways, practice essential maneuvers, and perform task-based modules designed to mirror real clinical challenges.

RESEARCH PAPER WRITING



NEUROINVESTIGATIONS



Explore the fascinating world of Neuroscience in this interactive workshop designed to delve into the latest techniques and tools used to study brain activity, cognitive processes, and neural pathways. Participants will learn about cutting-edge technologies like EEG, Transcranial Stimulation and Nerve Conduction Studies while engaging in hands-on experiments and group discussions.

BASIC SURGICAL SKILLS



Join us in learning the fundamental art of suturing! Get ready to explore and master an array of suturing methods and knotting techniques, all under the expert guidance of experienced professionals. This is your chance for hands-on practice, where you'll perfect your hand positioning and control the tension to create flawless sutures.

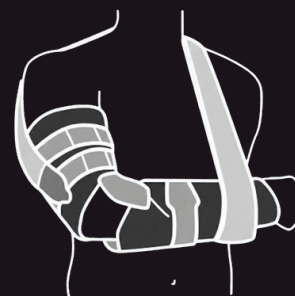
This workshop is a structured session designed to enhance participants' academic writing skills, focusing on the development, critique, and refinement of research papers. These workshops provide a collaborative environment where writers can receive constructive feedback and guidance.

RADIONUCLIDE IMAGING AND THERAPY



This workshop introduces key concepts in radionuclide imaging and therapy, covering principles of PET, clinical indications, radiopharmacy, patient preparation, image acquisition and interpretation, and therapeutic radionuclides. It includes a guided tour of a functioning PET suite to illustrate practical workflow, safety measures, and real-world clinical application.

SPLINTS AND PLASTERS



A hands-on training session focusing on essential Orthopaedic techniques, including pelvis stabilization, cervical collar application, spine board training, and Plaster of Paris methods. Participants will also learn common splinting techniques for upper and lower limb injuries, equipping them with practical skills for effective Orthopaedic care.

HANDS-ON GYNAECOLOGY



Step into the world of Gynaecology with this transformative workshop designed to dive into essential skills, from mastering the per speculum examination to hands on training in IUCD insertion and PAP smear techniques.

RESEARCH METHODOLOGY



This workshop is designed to provide participants with a comprehensive understanding of the principles and techniques essential for conducting effective research such as research design, data collection methods, statistical analysis, and ethical considerations. In the end, participants will learn to:

- Select appropriate qualitative and quantitative research method
- Analyze data using modern tools and techniques.

NEONATAL RESUSCITATION



Immerse yourself in interactive small-group sessions led by expert instructors. This workshop blends mannequin-based practice with focused training in neonatal airway management, circulation, and emergency medication administration. Strengthen your skills through realistic scenarios that build confidence for high-pressure situations.

FORENSIC DECODED



The workshop offers an overview of important forensic procedures, demonstrating how medicolegal examinations are conducted, how injuries are interpreted, and how evidence is documented and preserved in practice.

PAEDIATRIC OXYGEN THERAPY



Explore the fundamentals of pediatric oxygen therapy with guided demonstrations and clear, practical explanations. This workshop walks you through different oxygen delivery methods, their proper indications, and the equipment commonly used in clinical settings. Build confidence in managing respiratory support for children as you prepare for real-world pediatrics.

HANDS ON OPHTHALMOLOGY



Join our interactive workshop which will equip you with essential skills to diagnose and manage common ophthalmic conditions. Through case-based discussions, live demonstrations, and small group exercises. Become an ophthalmic surgeon for a day with live demonstrations and hands-on training in techniques used in surgeries

PLASTIC SURGERY



This workshop provides hands-on training in techniques used in plastic surgery through a practical approach to important reconstructive flap procedures, featuring case discussions, step by step tutorials and hands-on practice sessions.

EMERGENCY OTORHINOLARYNGOLOGY



Enhance your skills in managing ENT emergencies through hands-on training and expert guidance. This comprehensive workshop covers surgical airway management, epistaxis control, foreign body removal, audiography, and much more.

ESSENTIALS OF OBSTETRICS



Immerse yourself in this hands-on workshop and master the art of managing labour like a pro! From understanding the delicate balance between normal and abnormal labour to perfecting essential techniques like episiotomy and suturing, you'll gain practical expertise through interactive demonstrations and guided practice.

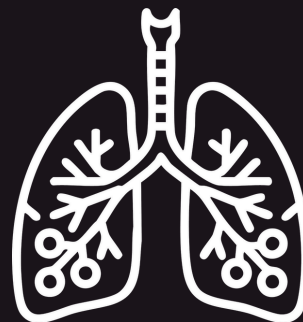
TRAUMA CARE



Master the ABCDE approach and essential trauma skills through an expert-led hands-on session with stations including C-spine Control & Helmet Removal, Bleeding Control & Wound Management, Splinting & Pelvic Binder Application, Log Roll, Shifting & Extrication.

Don't miss out on this chance to enhance your trauma management skills!

AIRWAY MANAGEMENT



Develop vital skills in managing airway emergencies with this immersive training program. Learn and practice key techniques such as Endotracheal Intubation, Cricothyroidotomy, and laryngeal tube insertion under the guidance of expert faculty from JIPMER's Emergency Services Department.



Contact:

Wafiq - 99946 32033

Sarath - 94969 85648

Nitin - 93915 97394

Vipul - 99854 10507

BACK TO CONCOURSE



JIPMER MUNSOC PRESENTS



MODEL HEALTH ASSEMBLY '26

13-15 MARCH

The Model Health Assembly (MHA), much like a Model United Nations, serves as a simulation of a global decision-making body. Delegates step into the shoes of world leaders, honing critical thinking, collaboration, and decision-making— essential skills for emerging leaders in healthcare and beyond.

Once again, the highly anticipated MHA is back at Connaissance 2026, featuring a single engaging committee with five stimulating sessions spread across three days. Newcomers are warmly encouraged to participate! This is an excellent gateway to the exciting world of simulated conferences, providing unparalleled opportunities for networking and meaningful connections.

How to register?

The application and registration for MHA will take place through an online form. Once selected, portfolios will be assigned following the standard MUN process. Stay updated on committee announcements, registration details, and key dates by following [@jipmermunsoc](#) and [@jipmerconnaissance](#) on Instagram!

OM
98669 71243

[BACK TO CONCOURSE](#)

ACCOMMODATION



- Basic delegate registration is necessary to avail accommodation through the website. A refundable caution deposit of Rs. 500/- per head for all delegate card holders should be paid (in CASH only), at the finance desk after arrival.
- The accommodation provided will be basic, along with complimentary mattresses and buckets. Participants are responsible for returning the same in good condition.
- Bed sheets and pillow covers will NOT be provided.
- A fine of Rs. 4500 for each mattress and Rs. 1000 for each pillow shall be levied if any damage is reported.
- Only common bathrooms will be provided to the delegates.
- Accommodation for delegates will be allotted by the organizers based on date of arrival and duration of stay.
- Accommodation will mostly be provided in dorms and halls (with more than 10 people per hall).
- Rooms may have to be shared with delegates of other colleges.
- Accommodation and mattresses will be given on a first come-first serve basis.
- Transportation will NOT be provided by the organizers.
- Every delegate should settle all financial accounts at the finance desk at least one hour before their scheduled check out time.
- Refund will NOT be provided under any circumstance.



Contact:
Samrudh - 90197 82950

BACK TO CONCOURSE

FOOD



Connaissance 8.0 promises a delightful culinary experience designed to complement the vibrancy of the conference.

From wholesome VEGETARIAN meals to flavourful spreads, every detail reflects thoughtful planning and warm hospitality. Refreshments will be provided during breaks to all delegates as well.

Catering passes can be conveniently booked in advance through the official website, www.jipmerconnaissance.com ensuring a seamless and enjoyable dining experience throughout the event.



Contact:

Harini - 99944 52417

Navin Raam - 8610556898

BACK TO CONCOURSE



The Grand Gala Dinner

As Connaissance 8.0 reaches its celebratory finale, the Gala Dinner invites you to unwind and connect in the true spirit of **Ignis Mentium**. This evening marks more than the end of a conference—it is a celebration of ideas, friendships, and shared experiences. Set in an elegant ambience with delightful cuisine and engaging conversations, the gala brings together delegates, speakers, and guests for a night of warmth, laughter, and lasting memories beyond the halls of academia.

Stay updated on announcements, registration details, and key information by following [@jipmerconnaissance](#) on Instagram!

[BACK TO CONCOURSE](#)

HOW TO REACH US?



Nearest International Airport

Meenambakkam Arignar Anna (MAA)
Chennai International Airport
Distance: 140km

Nearest airport

Puducherry Airport
Distance: 5km

Nearest Railway Station

Puducherry Railway Station
Distance: 5km



[BACK TO CONCOURSE](#)

CONTACTS

- Organizing Secretary:
Steve Manoj - 86680 05612
- Event Coordinators:
Nishit - 70323 68780
Shahid - 89783 72381
Chinua - 78926 15405
- Conference Facilitators:
Amrutha - 78997 49257
Ketaki - 90221 54520
Shuba - 96630 18045
- Academic:
Bharath - 81225 60086
Dinesh - 94903 64128
Rithik - 80566 96968
- Scientific:
Tarunasri - 77608 87335
Radhika - 79075 07950
Shashank - 83319 32267

- Workshops:
Wafiq - 99946 32033
Sarath - 94969 85648
Nitin - 93915 97394
Vipul - 99854 10507
- Model Health Assembly:
Om - 98669 71243
- Accomodation:
Samrudh - 90197 82950
- Food and Catering:
Harini - 99944 52417
Navin Raam - 86105 56898
- Public Relations:
Hemapriya - 70924 31119
Yusra - 99865 32764

[BACK TO CONCOURSE](#)

Z R A I S R I J A N
A M A N H A R S H R
Y **B R O U G H T** A A
D I V A K A R A N H
A E **T O** P H X I E U
A L E X R T H A M L
A Z H S E U A **Y** A A
D I A S E R I **O** A S
I N R H T M A **U** H H
T A I A A A H A I I
Y N A R M A S A L K
A N A A **B Y** I A E A
S R I N I T N **A D S**

